

# LOBO

advanced platform system

## Product Application – Portable Lifting Slider Beam



LOBO Systems provides easy to attach lifting slider beams in a range of lengths.

The beams are fitted to standard LOBO components or integrated into a LOBO System with ease.

This is all done without the need for any tools and yet can be flat packed for transport or storage.



Quick to assemble, they can be used for many industrial applications to assist in maintenance of pumps, gear boxes, motors and many other machines.

LOBO beams can be positioned within a LOBO structure to facilitate limitless applications.



[www.lobosystems.com](http://www.lobosystems.com)

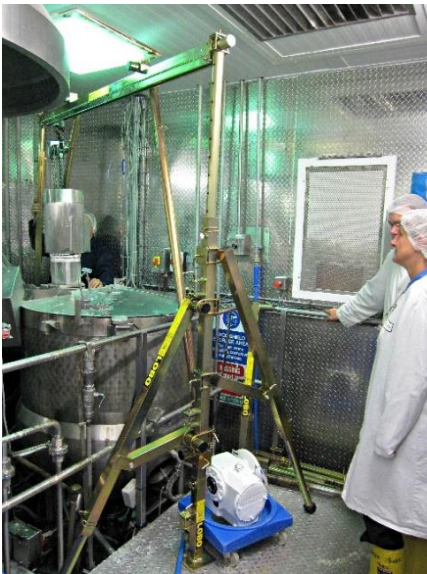
### Conformities

EU: BS EN1004:2004 BS 1139 parts 3 & 4,  
USA: OSHA Compliant, ANSI A10.8, 29 CFR Part 1920 (General Industry)  
Canada: CSA Z797-09 and 269.2 (M87 and -16)  
Australia: AS/NZS 1576.1:2010 and AS/NZS 1576.3:2015 Tower



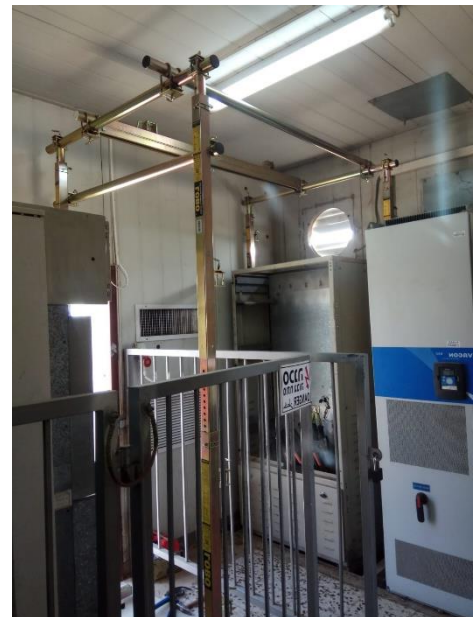
# LOBO

advanced platform system



Beams are rated and certified with a Safe Working Load (SWL) of 500Kg/1100 lbs maximum.

LOBO Slider Beams are designed to fully integrate with the LOBO System or can be configured freestanding.



Five lengths are available: 1.2m/4ft | 1.8m/6ft | 2.4m/8ft | 3.0m/10ft | 3.6m/12ft  
All rated at 500Kg/1100 lbs.

[www.lobosystems.com](http://www.lobosystems.com)

#### Conformities

EU: BS EN1004:2004 BS 1139 parts 3 & 4,  
USA: OSHA Compliant, ANSI A10.8, 29 CFR Part 1920 (General Industry)  
Canada: CSA Z797-09 and 269.2 (M87 and -16)  
Australia: AS/NZS 1576.1:2010 and AS/NZS 1576.3:2015 Tower

